

# Beach I Spy

KS1

KS2

Science

## Learning Outcomes

After taking part in this activity children will be able to identify some of the natural flotsam found on the strand line and understand where it has come from.

## Before the visit

A quick look at Resource 4, Beach I Spy will prepare children for this game of beach detectives. The natural flotsam cast up on a beach, particularly after a storm, gives some clues as to the creatures that live in the deeper oceans and what might have been carried vast distances by the sea.

## During the visit

**Remember** – always check the tide times to ensure you will not be cut off by an incoming tide.

- Be careful what you pick up on the beach
- Only take away empty shells
- The main beaches at Margate and Ramsgate are raked by tractors in the Summer months so you have to find a stretch of beach away from the main areas.

Armed with Resource 4, Beach I Spy Identification Sheet, walk the tide line and see what you can find. Remember, you're looking for natural things, not man-made rubbish.

Optional: *You can always take a few litter sticks & bags to carry out a two-minute beach clean to remove any man-made litter at the same time, but stress to use the sticks and not hands for this.*

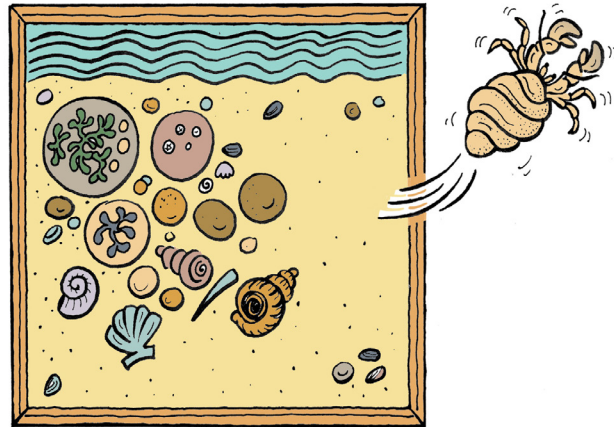


## Marine memory game.

This is a fun way to remember what children have found on the beach.

Here's how to play it:

- Collect a dozen objects such as seaweed, shells, pebbles, feathers, mermaid's purse from the beach
- Go through the collection and discuss each object
- Arrange the objects on the beach and give children one minute to concentrate on the objects and remember them
- After one minute tell children to turn their backs and remove one object
- Children turn around, can they guess which object has been removed and can they remember anything about it?



If you're thinking about making the Rock Pool Diorama when back in school you might want to keep some small shells and bits of dried seaweed to use when decorating the Diorama.

## After the visit

Use objects found on the beach as part of the Rock Pool Rummage display and/or set up a classroom version of the Marine Memory game.

## Resources

Resource 4: Beach I Spy, Identification Sheet.

